

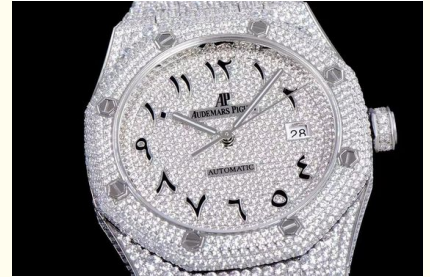
## Personalized Customization One to One Top Tier Replica of Renowned Watch Brands

Our Product Introduction

for more products please visit us on [wristwatchmechanical.com](http://wristwatchmechanical.com)

### Basic Information

- Minimum Order Quantity: Negotiated
- Price: Negotiable
- Packaging Details: Gift box
- Delivery Time: 5-15 day
- Payment Terms: L/C, D/A, D/P, T/T, Western Union, MoneyGram
- Supply Ability: 600,000 cores



### Product Specification

- Case Diameter: 40mm
- Crystal: Sapphire
- Markers Color: Silver
- Strap Color: Black
- Bezel: Fixed
- Dial Color: White
- Hands Color: Silver
- Case Material: Stainless Steel
- Highlight: Customized Swiss Luxury Watch, 40mm Case Swiss Luxury Watch



### More Images



## Product Description

Here are two selling points for personalized customization of one-to-one top-tier replica of renowned watch brands:

**Unique Style with Precision Replication:** With our personalized customization service, you can own a replica of your favorite luxury watch that is indistinguishable from the original. Our one-to-one replication process ensures meticulous attention to detail, replicating every aspect of the original watch, including its design, materials, and functions. But the beauty of our service lies in the ability to personalize it to your taste, allowing you to create a truly unique timepiece that reflects your style and personality.

**Quality and Affordability:** Our top-tier replicas are crafted with the finest materials and precision engineering, ensuring a quality that rivals the original. However, by offering replicas instead of the genuine watches, we are able to provide you with a more affordable option to own a luxury timepiece. This means you can enjoy the elegance and prestige of a renowned watch brand without breaking the bank. Combine this with our personalized customization service, and you have a watch that is both stylish and within your budget.



至谦优品

Shenzhen Zhiqian Youpin Technology Co., Ltd.



16601515828



zhiqian830@hotmail.com



[wristwatchmechanical.com](http://wristwatchmechanical.com)

107, Building A, Building 1, Chuangye, No. 43 Yanshan Road, Merchants Street, Nanshan District, Shenzhen